

# Into the LIGHT

Restoration Plan  
Cinisi (Pa), Italy  
May 2005



2.

### The brief

The client asked for an expansion plan for a new dining room and to make more space for the existing living room. At the same time the client needed a reorganization plan for the garden with the insertion of a little swimming pool

### The concept

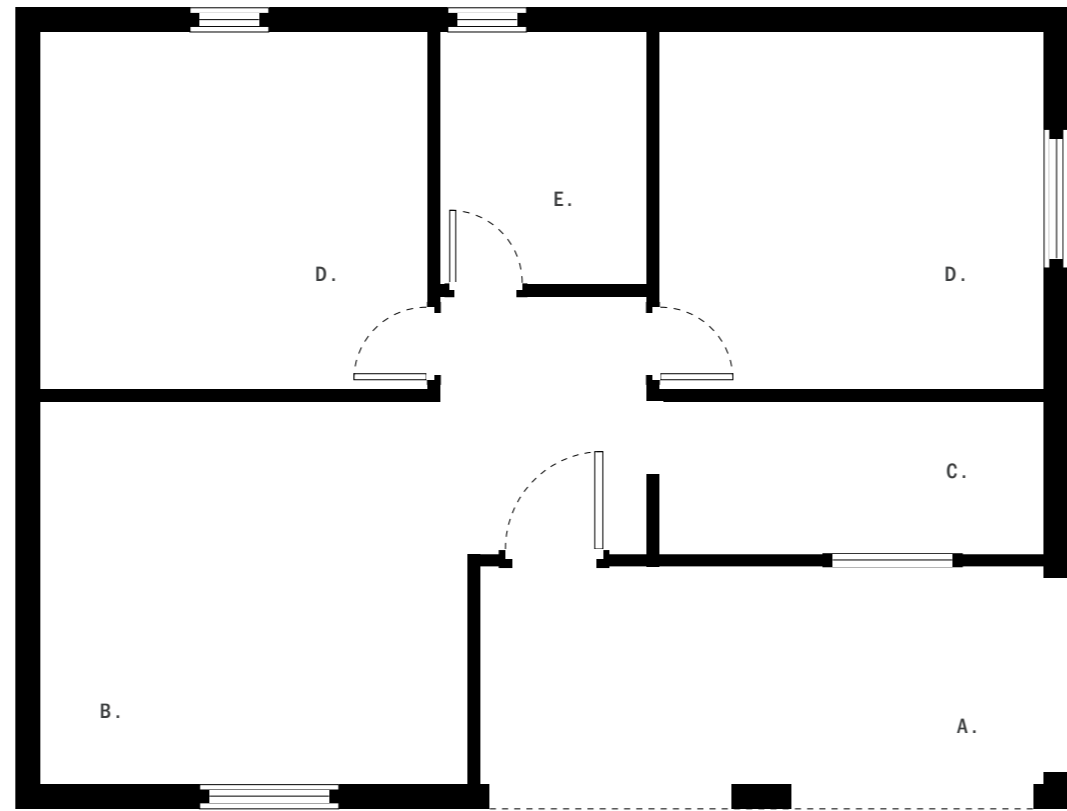
The house had quite a big garden and a spontaneous inclination towards the light. Nevertheless it failed in the attempt of letting the light in, because of the very little windows. Also the sun was obstructed by the presence of a little patio in the front area. The idea was to make more room for light by opening three big doors in the new front elevation. In this way we managed to establish a very strong connection between the inside and the outside, especially during summer when all the three doors remain open all day.

### The project

The problem of space was solved by closing the patio to obtain the new dining area, while the old openings were left in place. In this way we obtained a direct connection between the kitchen and the new dining room. In the opening left by the old main entrance we managed to create a wood and metal shelving allowing the light to reach the other rooms. In order to emphasize the connection between inside and outside we decided to use the same wood flooring for both the living room and the external floor. For the remaining floor we chose a black polished concrete. The back green wall works like a backdrop contributing to bring together the living space. It was painted with special UV paint stripe to stretch the space and to add light spots. The pool was placed directly in front of the house where a little longitudinal flowerpot served as a partition.

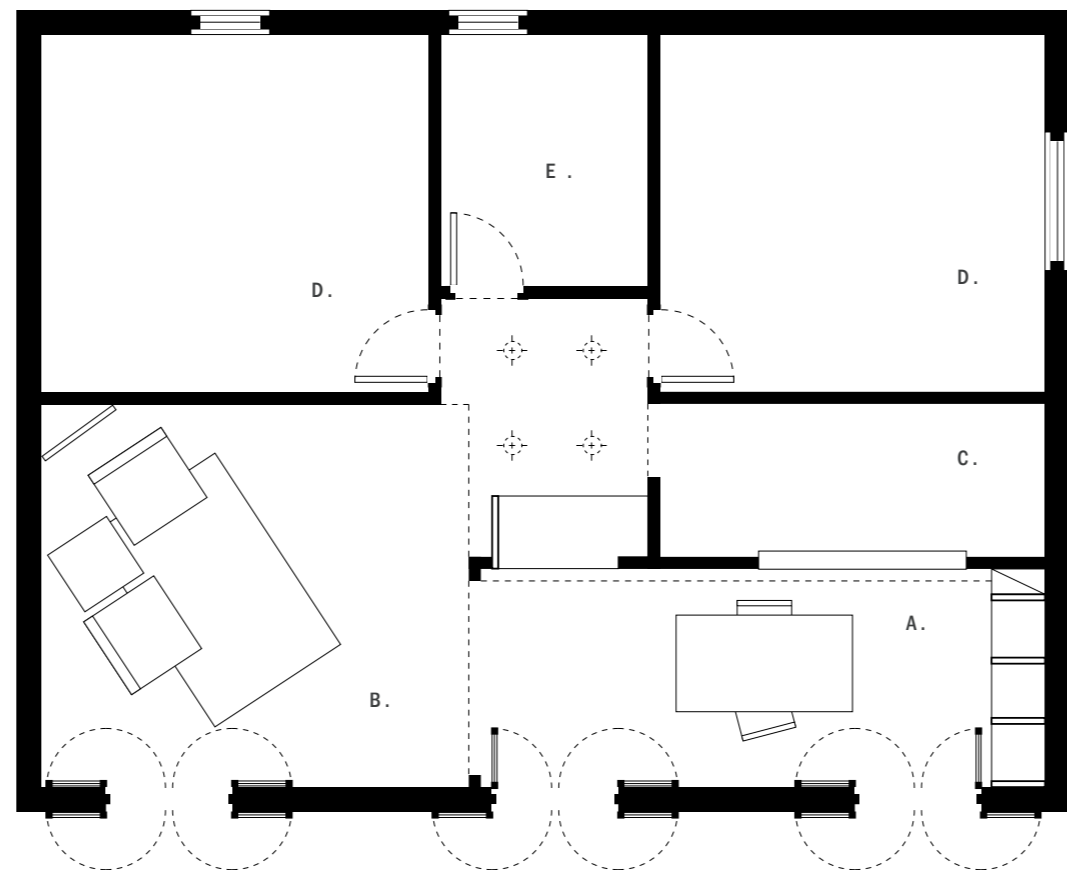
1. The main entrance to the house

2. The new three doors in the front elevation let the light spread in the house



The floor plan before and after the expansion plan

- A. Patio
- B. Living / dinin room
- C. Kitchen
- D. Bedroom
- E. Bathroom



- A. Dining room
- B. Living room
- C. Kitchen
- D. Bedroom
- E. Bathroom

3. A view of the house from the pool

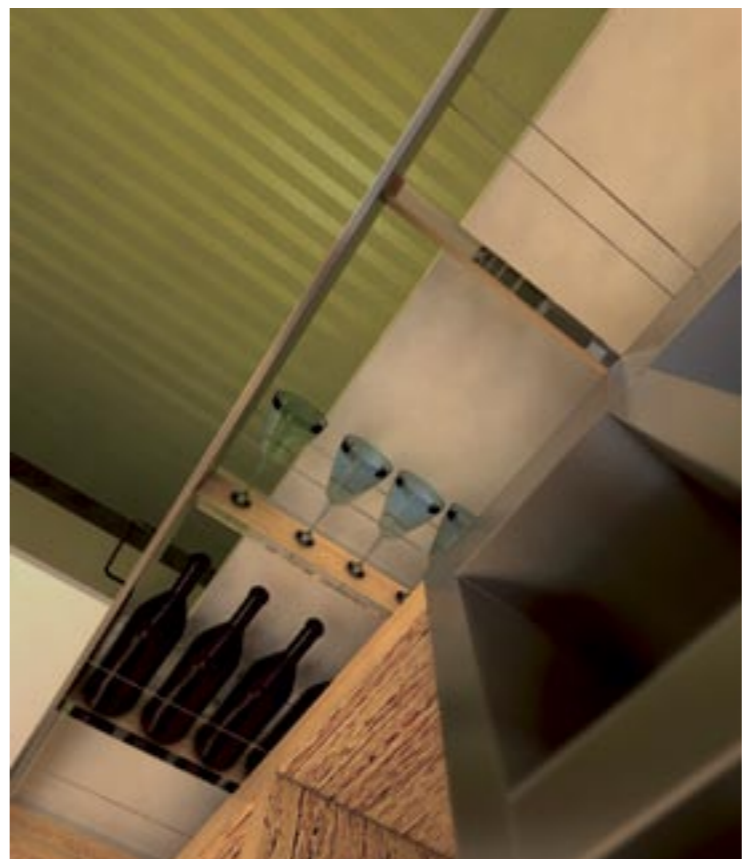


3.

4. The relationship between the inside and the outside is emphasized by the use of the same wooden floor



4.



5.

4. A view of the inside from the living room

5. A detail of the handcrafted library with the "secret" shelves for glasses and bottles

6. A view of the inside from the dining room. The antique table was modernized with a glass plane

7. The dining room back wall is lighted by 2 neon lamps

8. The lighting system of living and dining rooms



7.



8.