

# The Artist House

Preliminary Plan  
Bagheria ( Pa ), Italy  
Nov 2002



1.

1. Model view from the front elevation

### The brief

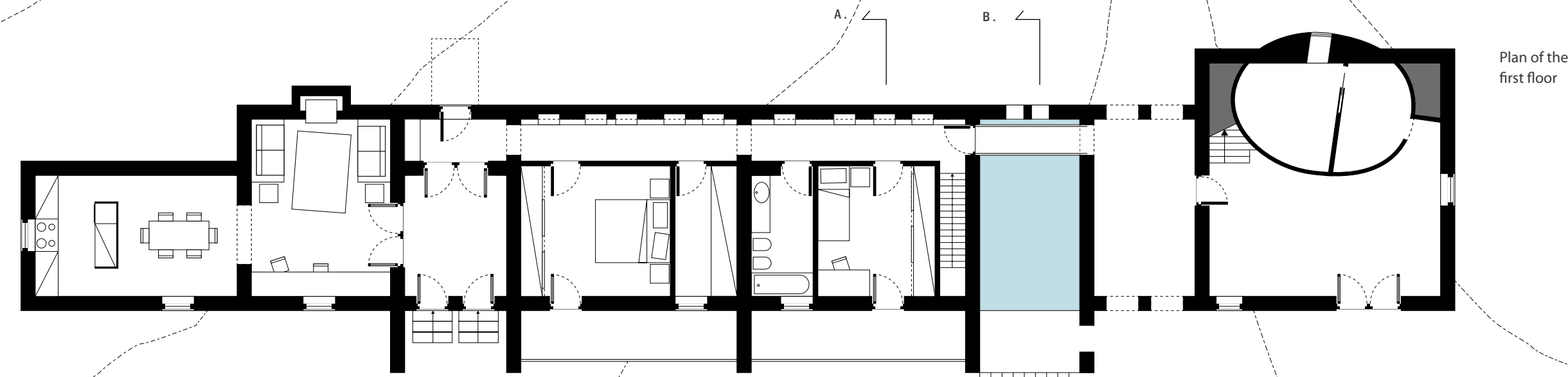
The client ( a sculptor ) asked for the planning of a house with an outbuilding to be used like a studio atelier. The studio had to be independent but directly connected to the rest of the house and should represent the artist personal style. The house had to blend with the natural environment.

### The concept

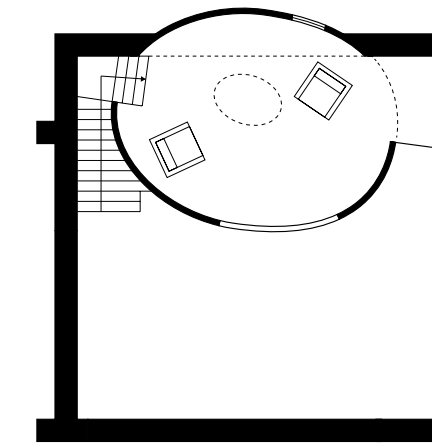
The area is situated on a slope in front of the sea. It can be reached by following a path placed between two little hills. As you walk on this path you can discover gradually the sea and the environment. The idea is to suddenly interrupt the path by placing a long stone wall, making visitors look at the only opening that act like a frame around the sea. The wall allows the house to extend along a straight line leaving all the rooms in direct connection with the panorama.

### The project

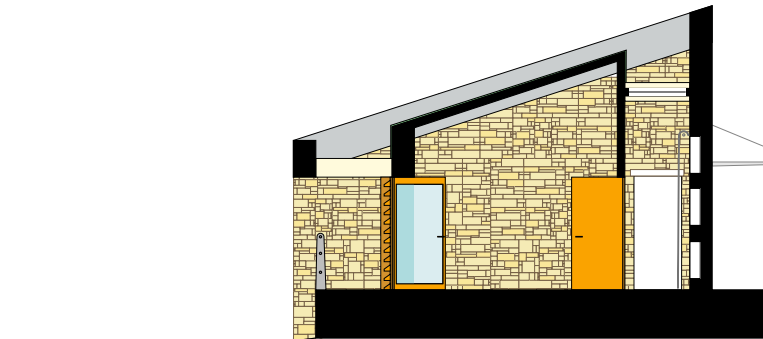
The house follows a "comb" path, with its secondary walls placed orthogonally against the main back wall. Both the principal and the secondary walls are made up of stone to improve the connection with the environment. The interior side of the main wall is carved with square shelves to make the most of the space, while the corridor is brightened up by the skylight. A little pool is placed between the house and the studio to underline the difference among the two areas and a footbridge allows you to cross it. The studio is characterized by a curved object fitted in the main volume to reflect the artist work style. Inside this object a private relax space was created.



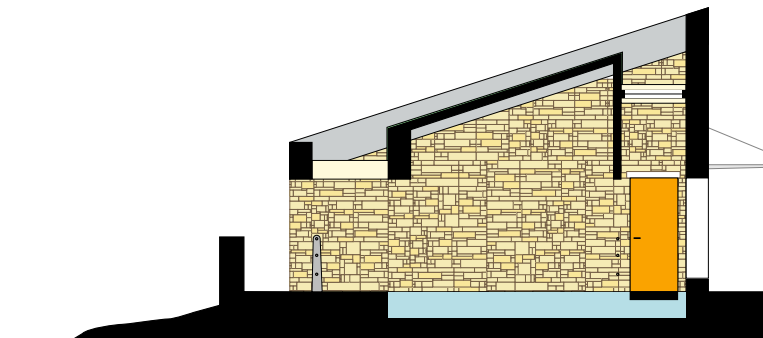
Plan of the first floor



Plan of the second floor



Section A. A.



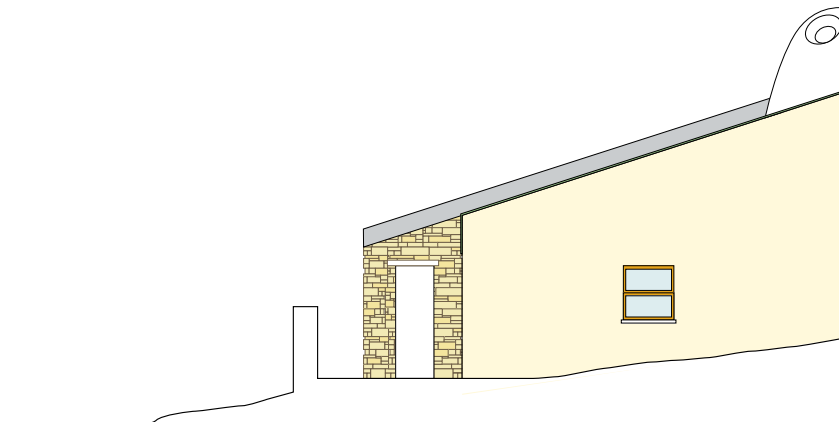
Section B. B.



1. Side view of the model showing the "curved" object fitted in the studio area



Main elevation



Side elevation